

---

November 2020

---

Apologies for the delay...that time of year! We hope you enjoy our look back on November

**MORE APOLOGIES - THIS EDITION WENT OUT WITH AN INCORRECT LINK - The Stained glass window piece now links correctly**

## Welcome to the November Castle Transformation Newsletter

**This month, we feature:**

- **Project update** - First painting, stained glass, digital installations
- **Preloaded** - Sneak film preview
- **Castle Project in Nottingham Arrow** - Photo updates
- **Stained glass installation** - The whole project
- **Nottingham Castle Trust news** - Museum buddies
- **Top Trumps** - No.19 - John Jammot
- **Visit Nottinghamshire** - Bringing in new tourism

**Image (below):** Armistice Day 2 minutes silence held on site during the construction and exhibition fit out phase of the transformation.

There are more images and latest news at [the Nottingham Castle Facebook page](#)



## Project update - November

**First painting is back** - It was a momentous occasion for everyone involved in the project this month, when the first painting was hung at the Castle! After 2 years in storage our beloved objects are gradually moving back in, and the first of these was the Lethiere painting *Homer Singing His Iliad at the Gate of Athens*, which forms part of the Classical World display in the Castle's Long Gallery.

It looks beautiful on the freshly painted wall, underneath the restored ceiling. As the exhibition fit out draws to a close in the coming days, the recant of objects will start in earnest throughout December.

**Stained glass update** - Another object taking pride of place this month was the Camm Bros stained glass window, which is being reinstated to its original archway at the end of the ground floor galleries.

A new bespoke frame has been commissioned for the install, and collections staff held their breath when sections of the frame were transported to the collections store for a trial fitting.

Happily, the glass panels fitted perfectly. The panels will be triple glazed for protection and will provide a stunning feature for visitors to both the ground floor galleries and restaurant.

This object was commissioned in the 1880s to commemorate the opening of the Castle Museum in 1878, and it seems fitting that it is brought back to the Castle for its re-opening in 2021.

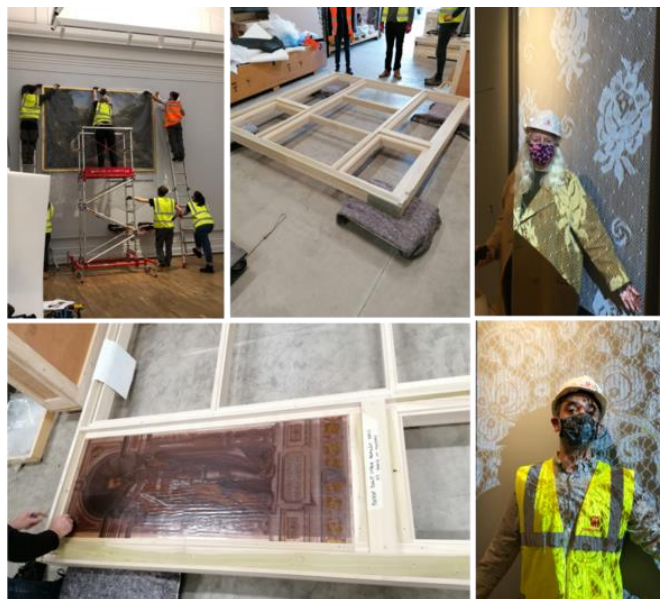
**New digital installations** - Our Digital Team has been hard at work over the last few weeks during the install of digital interactives and software across the gallery spaces. This has been a magical time, as the site has started to come to life with films, audio, games and interactives being tested and installed.

The variety of experiences is immense, and the finish of the individual activities is to an exceptional standard.

*Pictured below right are Cal Warren, Programme Manager, and Joe Bell, Digital Producer testing the Lace projection interactive in the Nottingham Lace Gallery.*

See below for a teaser of our virtual archery installation, kindly provided by creators [Preloaded](#)

[Back to top](#)



## Preloaded

Games Studio Preloaded was excited to share some work in progress teasers of one of our full body virtual games this month. They are also the creators of our Quarterstaff game, where visitors can try their luck against Little John in the atmospheric surrounds of the Robin Hood Gallery.

Click the image below for a sneak preview...

[Follow Preloaded on Twitter](#)

[Back to top](#)



*Click the image to start the preview film*

---

## Castle Transformation project in Nottingham Arrow

The project featured in Nottingham City Council's magazine for residents Winter edition, showcasing some of the lovely images of progress on site and giving details on how to become a Castle Volunteer.



Read more and explore the full article at the issue website pages 12-13

[Read the article](#)

[Back to top](#)

---

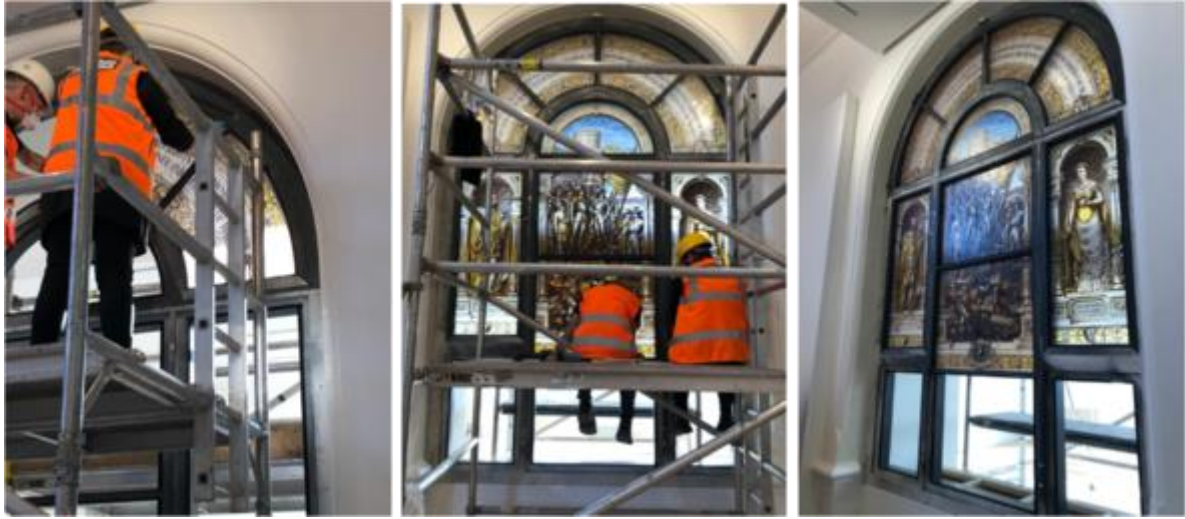
## In detail - Camm Brothers stained glass window

As this window has been reinstalled this month we thought we'd take a closer look at this object and it's journey back to being on display at the Castle.

Read more about the restoration of these panels in [our project blog](#)

[Back to top](#)





 Nottingham Castle  
@NottmCastle

[@RoystonMuseum](#) Today we'd like to share the story of the Webster family, who lived in the cottages in Brewhouse Yard, just below the castle 🏠🏡 They were actually the last family to live in the cottages, until 1908, when they were taken on by a local water company. #MuseumBuddy



10:41 am · 25 Nov 2020 · Twitter Web App

Nottingham Castle have been paired with Royston & District Museum and Art Gallery, in Hertfordshire (not far from Cambridge), and swapped stories of their respective museum, collections and more every day between 23 and 27 November.

Nottingham Castle has shared a sneak peek of installation, told the story of Brewhouse Yard's Webster family, as well as sharing their collections, including Winifred Nicholson's "Violas in a Window" and Siddig el Nigoumi's "Digna's Train".

In turn, the Castle has learned the story of Royston Museum's building, discovered their rich network of volunteers, and found out more about their collection, including the 24-meter-long "Royston Tapestry". View their full discussion via the [Castle's twitter account](#)

[Back to top](#)

## Nottingham Castle Trust News

### Nottingham Castle gets to know Royston Museum through #MuseumBuddy

This month, Nottingham Castle are taking part in #MuseumBuddy, an initiative founded earlier this year, through which two museums are paired up to share their content and find connections in their collections. The aim of the initiative is to keep the museum community connected during the current climate, in which many museums find their doors closed, to create new opportunities, and find links between the UK's diverse collections.

Nottingham Castle have been paired with Royston & District Museum and Art Gallery, in Hertfordshire (not



Goodly morning to our #MuseumBuddy @NottmCastle  
How are you this fine day? We'd like to share our building with you today. Here we are! Two different moods. We're bright & cheery like pic 1 today. What about you?



10:34 am · 24 Nov 2020 · Twitter Web App

1 Quote Tweet 9 Likes

---

## Newsletter signups

### Nottingham Castle newsletter: all the need-to-know news

With installation well under way, and exciting new announcements, including the launch of the new website, due soon, be sure to keep up to date with everything Nottingham Castle via their mailing list!

They promise only to contact you with the most exciting updates, Click the link to sign up and remember, you can unsubscribe at any time: [Join up now](#)



[Back to top](#)

---

## Top Trumps #19

Welcome to the nineteenth character in the series of Castle stories, turned into a game of Top Trumps.

Top Trumps #19 is **Major John Jammot** a Belgian Soldier of Fortune

**Find out more at:**

<http://www.nottshistory.org.uk/articles/tts/tts1914/hutchinson3.htm>

Please [email us](#) to let us know whether you agree or disagree with our scores.

[Back to top](#)



## Major John Jammot Belgian Soldier of Fortune

A Royalist in the English Civil War, John Jammot recaptured the Duke of Newcastle's home at Welbeck Abbey (pictured) from Parliamentarians in July 1645.



He was promoted to Major for escaping in disguise from Nottingham Castle and then escaped again when his Parliamentary captors fled in fear of oncoming Royalist troops.



## Major John Jammot Belgian Soldier of Fortune

### Scores

Style - 70

Claim to Fame - 3

Rebel Rating - 72

Dreadful Deeds - 22

Popularity - 35



### References

- <http://www.nottshistory.org.uk/articles/tts/tts1914/hutchinson3.htm>
-





## Tourism update - Visit Notts working to bring international visitors

Visit Nottinghamshire has been working closely with the Nottingham Castle team to help raise awareness and promote the transformation of this flagship visitor attraction to the media and travel trade ahead of its 2021 reopening.

The official tourist board for Nottingham and Nottinghamshire has attended a variety of travel trade events to discuss the Nottingham Castle transformation with international industry professionals, including

VisitBritain's VIBE event, VisitBritain's PR Connect event, World Travel Market and Waypoint.

The organisation is also in conversations with a number of journalists looking to pitch travel features about Nottingham Castle in 2021, and has featured Nottingham Castle in an interview with property consultants Fisher German when discussing the exciting possibilities and potential across the wider region in the coming years.

Nottingham Castle has also been promoted in the latest edition of the visitor guide for the region with 30 thousand copies distributed across the country as well as other accompanying marketing activity including newsletters and website promotion.

Image credit: Ian Wilson, Pixabay

[Back to top](#)

